

Probe Cleaning and Disinfecting Guide

ACCUVIX V20

see it all 
MEDISON

Names		Disinfectants					Cleaner				Gel
		Milton	Vircon	Sporox II	Gigasept AF ³⁾	Gigasept FF	Enzol	Klenzyme	Isopropyl alcohol (70%)	Metrizyme	Aquasonics 100 ³⁾
Type		Liquid					NA	Liquid		Gel	
Active Ingredient		Sodium Hypochlorite	NA	Hydrogen Peroxide	Succindialdehyde, Formaldehyde	Bersteinsäure	Dodecylphenoethoxylate, Sodium Xylene Sulfonate	Proteolytic Enzymes	Alcohol		Propylene Glycol
CA	C2-5EL	●	●	●	●	●	●	●	●	●	●
	C2-6IC	x	★				●	●	x	●	●
	C3-7IM	x					x	●	x	●	●
LA	L4-7EL		●	●			●	●	●	●	●
	L5-12/50EP										
	L5-13IS	x	x	●			●	●	x	●	●
	L6-12IS	x	x	●			●	●	x	●	●
	L7-16IS	x	x	●			●	●	x	●	●
	L8-15IS	x	x	●			●	●	x	●	●
PA	P2-4AC	x	x	★			●	●	x	●	●
	P3-5AC	x	x	★	x	★	●	●	x	●	●
EC	EC4-9IS	x	x	●			●	●	x	●	●
3D	3D2-6ET			x		●		●		●	●
	3D4-8ET			x		●		●		●	●
	3D4-9ES										
	3D5-9EK	x	x	x	x	x					●
CW	CW2.0	●	●	x	x	●	●	●	x	●	●
	CW4.0										

NOTE

x = Not compatible(DO NOT USE)

● = Compatible

Blank = Untested (DO NOT USE)

★ = Staining may occur on housing parts; however, the acoustic performance and image quality are not affected.

(1) Compatible but no EPA Registration

(2) FDA 510(k) qualified

(3) Has CE mark

- (4) Discontinued
- (5) Under Development

Following is information about manufacturer (or Distributor) of Detergent, Disinfectant, and Ultrasound Gel.

Product	Manufacturer or Distributor	Telephone number
Aquasonics	Parker Co.	+1-800-631-8888(USA)
Cidex	CIVCO Co.	+1-800-445-6741(USA) +1-319-656-4447(Worldwide)
Enzol	CIVCO Co.	+1-800-445-6741(USA) +1-319-656-4447(Worldwide)
Glgasept AF	S&M(Schulke&mayr) Co.	+44-114-254-3500(UK)
Gigasept FF	S&M(Schulke&mayr) Co.	+44-114-254-3500(UK)
Isopropyl alcohol (70%)	Local drugstore	None
Klenzyme	Steris Co.	+1-800-548-4873(USA)
Metricide	CIVCO Co.	+1-800-445-6741(USA) +1-319-656-4447(Worldwide)
Metrizyme	Metrex Research Corp.	+1-800-841-1428(USA)
Milton	Product & Gamble Australia Pty. Ltd.	+61-1800-028-280(Australia)
Nuclear	Nation Diagnostics Co.	+1-800-526-3867(USA) +44(0)-148-264-6020(UK)
Omnicide	Cottrell Ltd.	+1-800-THE-EDGE(USA)
Sani-cloth	PDI Nice/Pak Products Co.	+1-914-365-1602(USA)
Sekusept Extra	Henkel Hygiene GmbH.	+49-0211-797-0(Germany)
Sporox II	Sultan Chemist Inc.	+1-800-637-8582(USA)
T-Spray	CIVCO Co.	+1-800-445-6741(USA) +1-319-656-4447(Worldwide)
Virkon	Antec International LTD.	+1-403-286-1771(USA)
Wavicide	Wave Energy System Inc.	+1-800-252-1125(USA)

Cleaning

Cleaning is an important procedure that is carried out before disinfecting the probe. The probe must be cleaned after each use.

CAUTION

- Do not use a surgical brush when cleaning probes. The use of even soft brushes can damage the probe.
- During cleaning and disinfection, keep the parts of the probe that must remain dry higher than the other parts during wetting until all parts are dry. This will help prevent liquid from entering non-liquid-tight areas of the probe.

1. Disconnect the probe from the system.

2. Remove any biopsy adapters or biopsy needle guides. (Biopsy adapters are reusable and can be disinfected).
3. Discard sheaths. (Sheaths are single-use items).
4. Use a soft cloth lightly dampened with mild soap or compatible cleaning solution to remove any particulate matter and body fluid that remain on the probe or cable.
5. To remove remaining particulates, rinse with water up to the immersion point.
6. Wipe with a dry cloth.
7. If necessary, wipe first with a water-dampened clothe to remove soap residue.

Disinfection

Only disinfect vaginal and rectal probes. A 10^{-6} reduction in pathogens should be reached following the disinfection procedures in this Manual and using the following MEDISON recommended solutions.

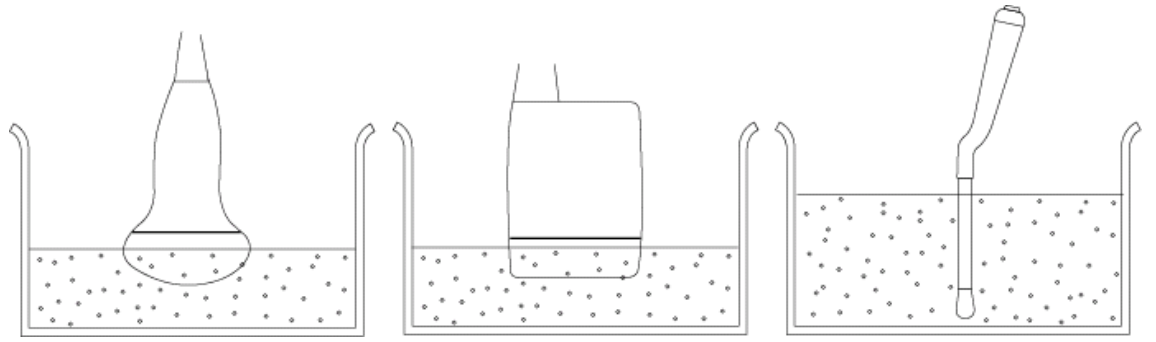
WARNING

- If a pre-mixed solution is used, be sure to observe the solution expiration date.
- The type of tissue it will contact during use dictates the level of disinfection required for a device. Ensure that the solution strength and duration of contact are appropriate for disinfection.

CAUTION

- Using a non-recommended disinfectant or not following the recommended disinfection method can damage and/or discolor the probe and will void the probe warranty.
- Do not immerse probes for longer than one hour, unless they are sterilizable.
- Only sterilize probes using liquid solutions. Avoid using autoclave, gas (EtO), or other non-MEDISON-approved methods.

1. Follow the instructions on the disinfectant label for storage, use and disposition of the disinfectant.
2. Mix the disinfectant compatible with your probe according to level instructions for solution strength.
3. Immerse the probe into the disinfectant as shown in the illustration below.
4. Using the instructions on the disinfectant, rinse the probe after the immersion process is complete.
5. Air dry the probe or towel it dry with a clean cloth.



[Figure 8.1 Disinfection]